

## Font Downloader

The Font Downloader application may be used to select a specific True Type font and convert it for storage and future use within an EPL2-based printer.

From within the application's Fonts tab, the required True Type font, point size and style may be chosen.

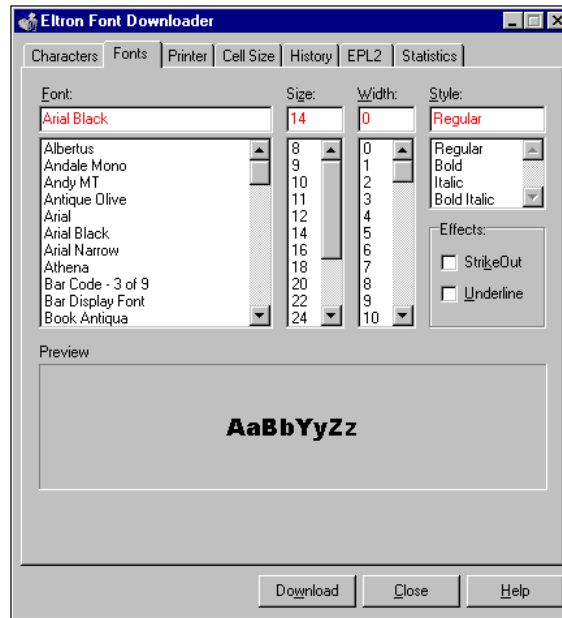


Diagram 1.

Having selected the font, choose the relevant printer and provide a font reference letter via the application's Printer tab. Additionally, ensure that the Print To File option is checked and that the Rotation choice is set to Both.

Note. The font reference letter will be the parameter declared within an EPL2 text command line to access the soft font data.

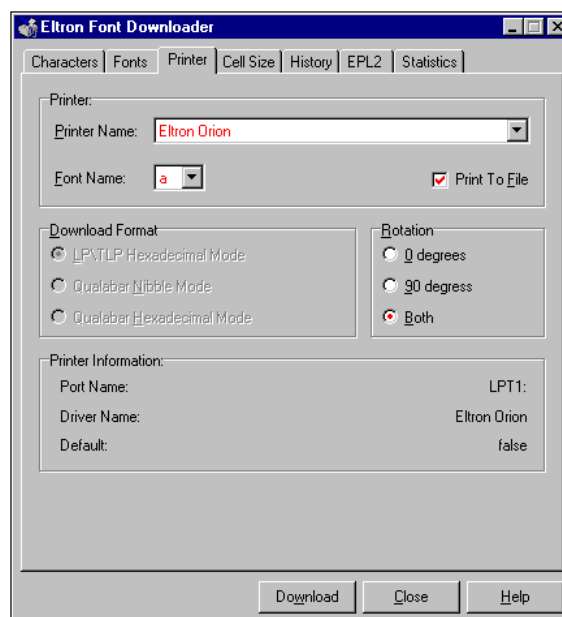


Diagram 2.

Via the application's Characters tab, selected the Character Set or specific characters that you require, ensuring that the ASCII Set Type is chosen.

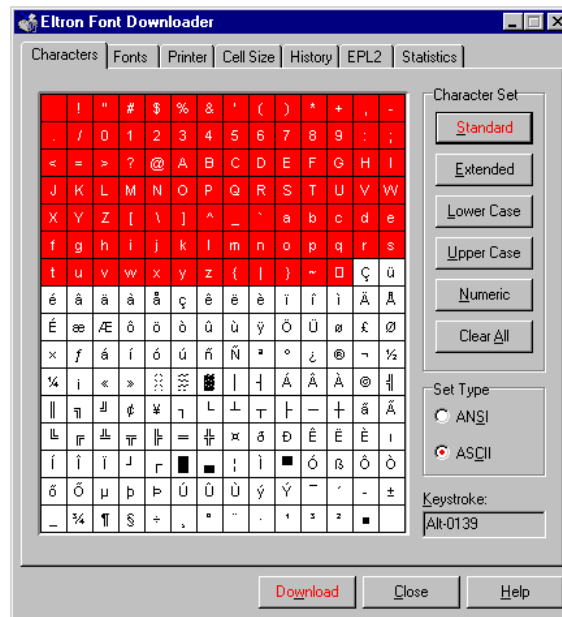


Diagram 3.

When the Download option is chosen you will be prompted for a file name and file type. Ensure that a binary file type is selected.

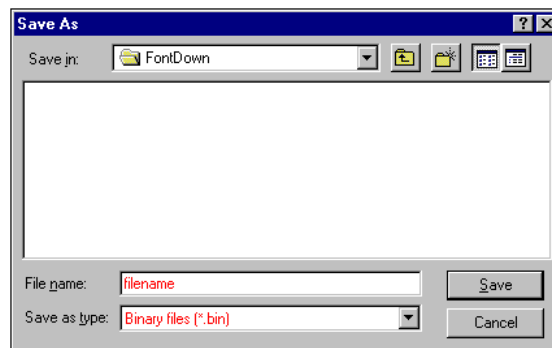


Diagram 4.

The newly created file will contain the soft font data to be downloaded to the printer. Its size should allow you to gauge how much of the printer's extended memory area (Emem) is required for successful storage.

Having verified that the printer has enough free memory, the file can be copied from its saved location to the printer via the DOS command line, ensuring the binary mode switch is specified. For example :

```
COPY filename.BIN LPT1: /b
```

Having downloaded the soft font data, the EPL2 EI-command may be used to detail the printer's stored font information. For example :

Ext. font information  
a:005char, 026 dots, 0dir.

To access this information via EPL2 command code :

A80,100,0,4,1,1,N,"Internal font 4"  
A80,200,0,b,1,1,N,"Stored Font a"



Diagram 5.